

Cohousing in Denmark & the Pacific Northwest

presented by Grace H. Kim, AIA

Research funded by University of Washington Valle Scholar Program.
Presentation provided courtesy of Schemata Workshop for the 2006 Art of Community Conference at Bastyr University.
All Rights reserved.
© 2006 Schemata Workshop



Professional background

- architect and cofounder of Schemata Workshop
- Bachelor of Architecture 1993 from Washington State University
- recently completed post-professional Master of Architecture from University of Washington
- area of focus: cohousing common house
- grant funding from Valle Scholar program to conduct field research in Denmark



Social investigation

- Immersion into community

Common House

- Most critical architectural aspect of cohousing – facilitates community
- Subsequent session will focus on this topic

Presentation format

- Part One – Denmark
- Part Two – Pacific Northwest



Communities visited

Pacific Northwest (US)

- Bellingham Cohousing
- Duwamish Cohousing
- Jackson Place
- Puget Ridge Cohousing
- Songaia
- Sharingwood
- Thornton Creek Coho
- Winslow Cohousing

British Columbia

- Windsong
- Cranberry Commons
- Quayside Village

Denmark

- Andedammen
- Ådalen 1
- Ådalen 2
- Bakken
- Blikfanget
- Bo 90
- Drivhuset
- Ibsgård
- Jernstøberiet
- Jerngården
- Jystrup Savværket
- Kæphøj
- Kilen
- Leerbjerg Lod
- Munksøgård
- Overblikket
- Sanct Hansgade
- Sættedammen
- Stavnsbåndet
- Skråplanet
- Trudeslund

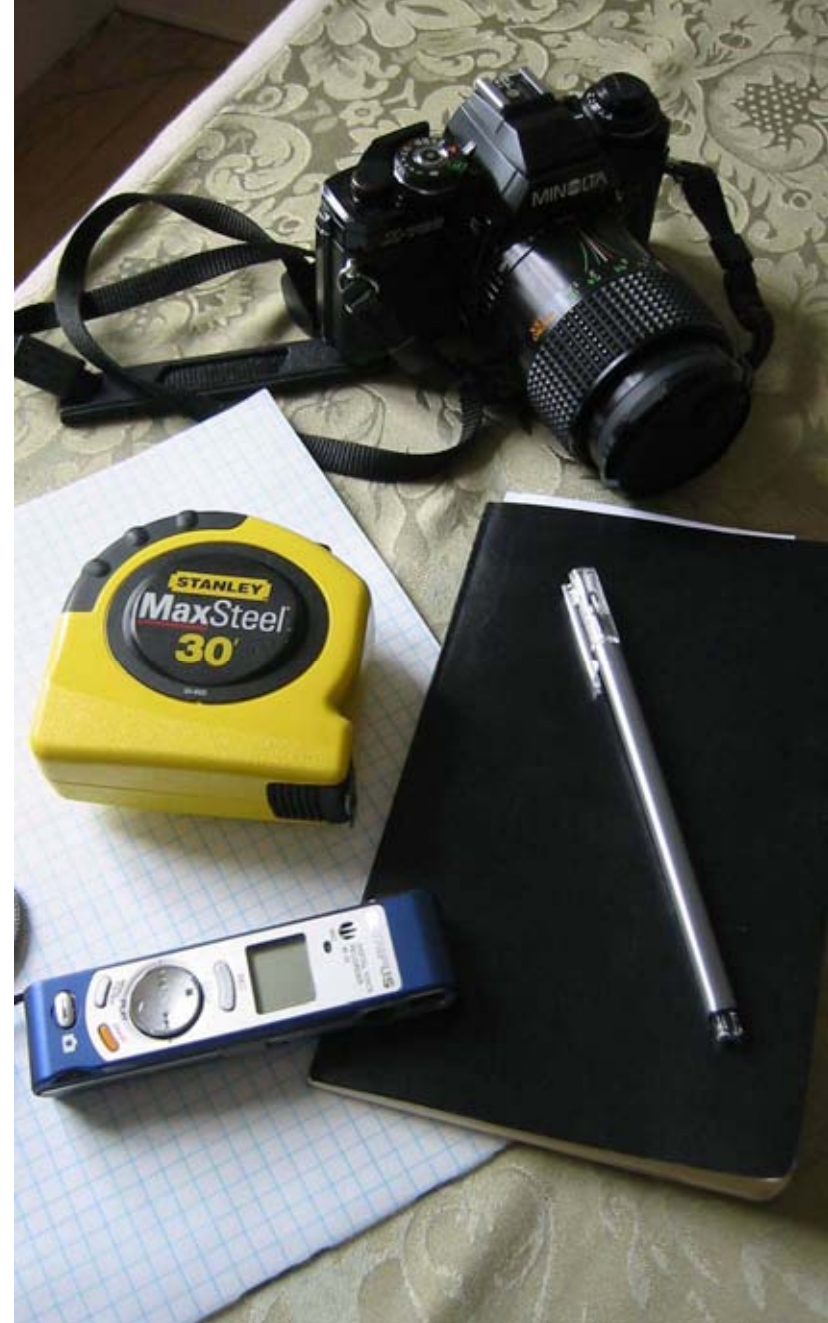
Methodology for field study

Architectural:

- Tour of site and common house
- Field measurements
- Photographic documentation

Social:

- Participation in meal preparation
- Dining with the community
- Audio-taped interviews
- Collected demographic information
- Overnight stay (when possible)



Ownership

- Co-operatively owned
- Condominiums
- Rentals

Settings

- Rural
- Suburban
- Urban / City Center

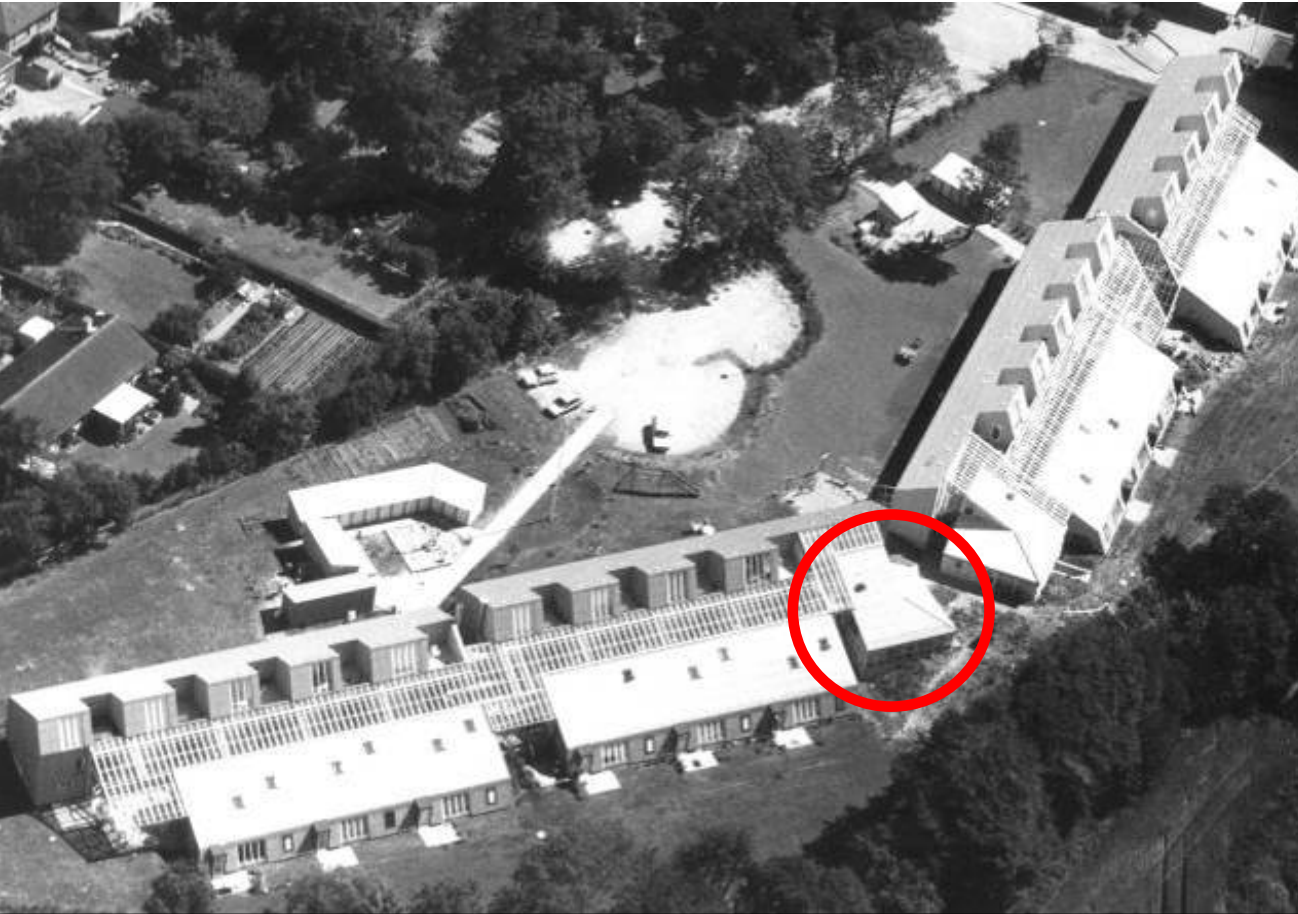
Size of community

- 8-33 families
- All the perfect size
- Many examples / models



Ådalen 1 & 2

- Townhouses along interior street (condo)
- Suburban
- 17 units



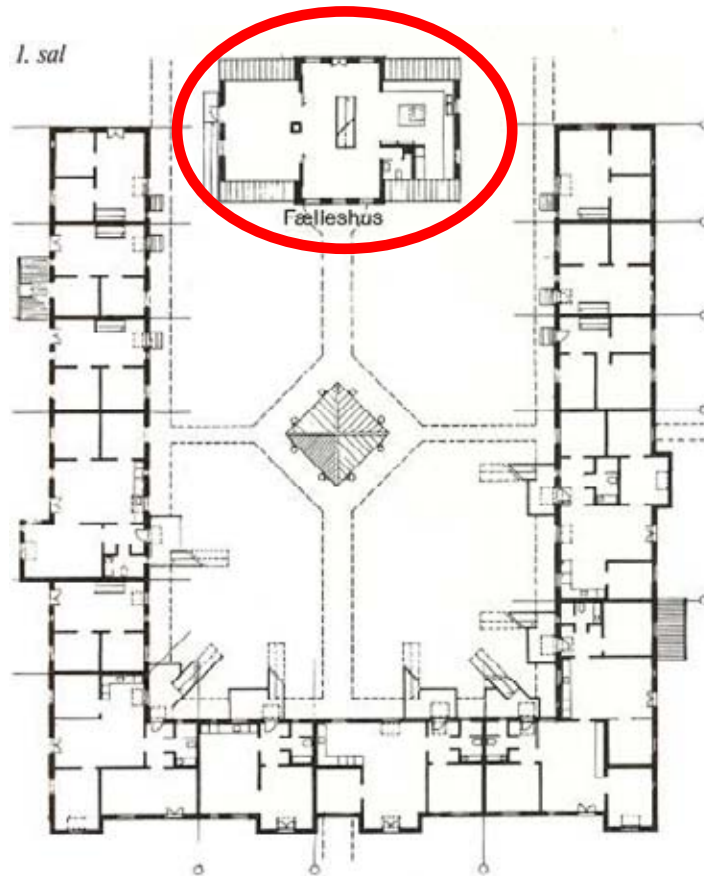
Bo90

- 4-story building (rental)
- Urban / City Center
- 17 units



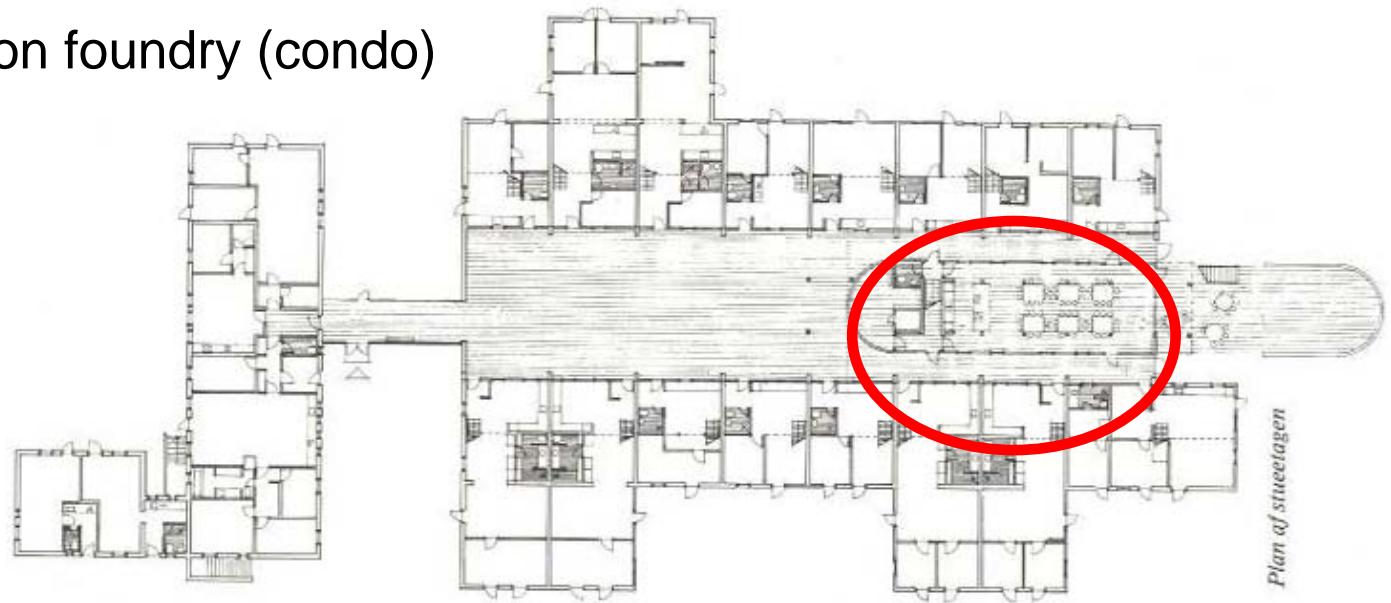
Ibsgård

- Rowhouses around courtyard (co-op)
- Suburban
- 20 units



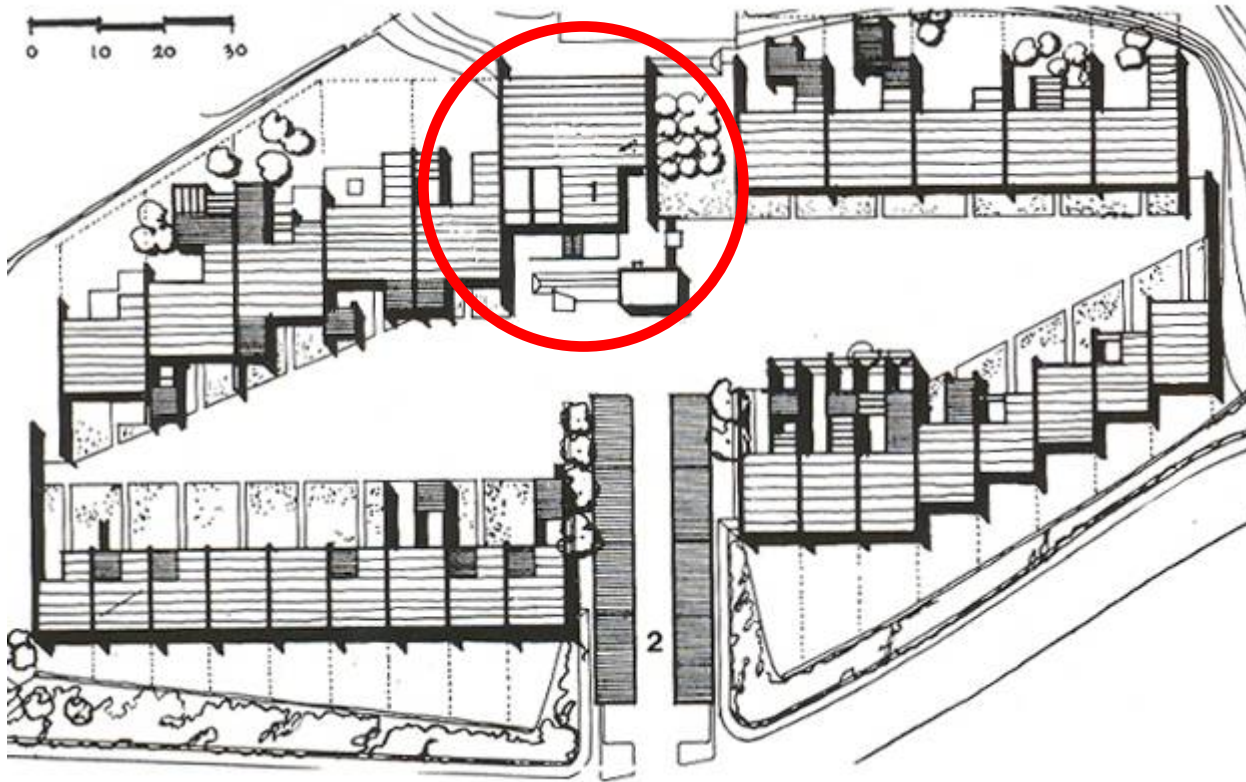
Jernstøberiet

- Retrofit of iron foundry (condo)
- Suburban
- 20 units



Sættedammen

- Townhouses around commons (condo)
- Suburban
- 34 units

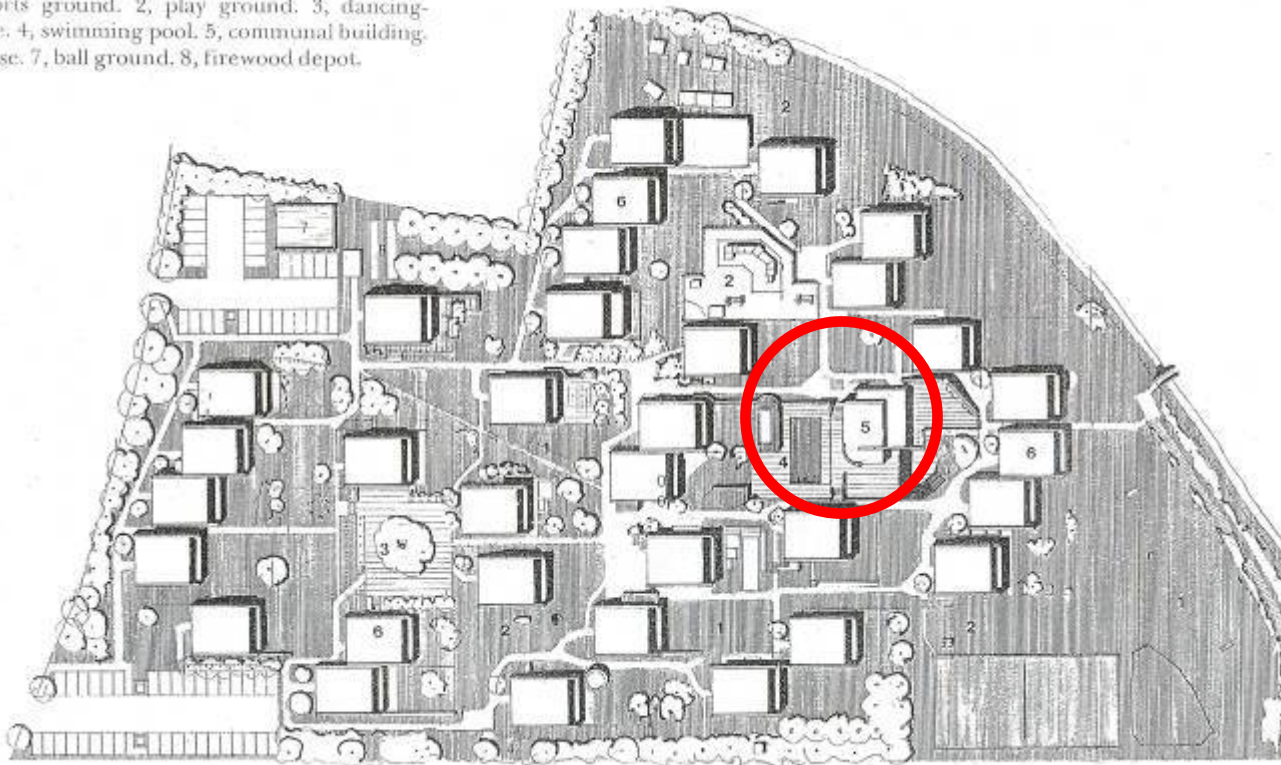


Skråplanet

- Detached single family homes (condo)
- Suburban/Rural
- 33 units

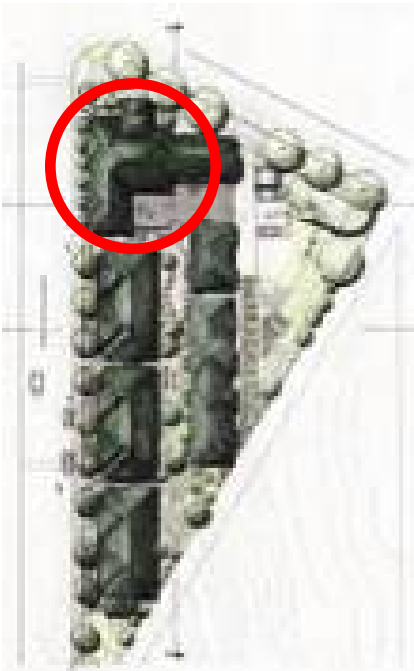
plan, 1:1500.

1, sports ground. 2, play ground. 3, dancing-
e. 4, swimming pool. 5, communal building.
6, ball ground. 7, firewood depot.



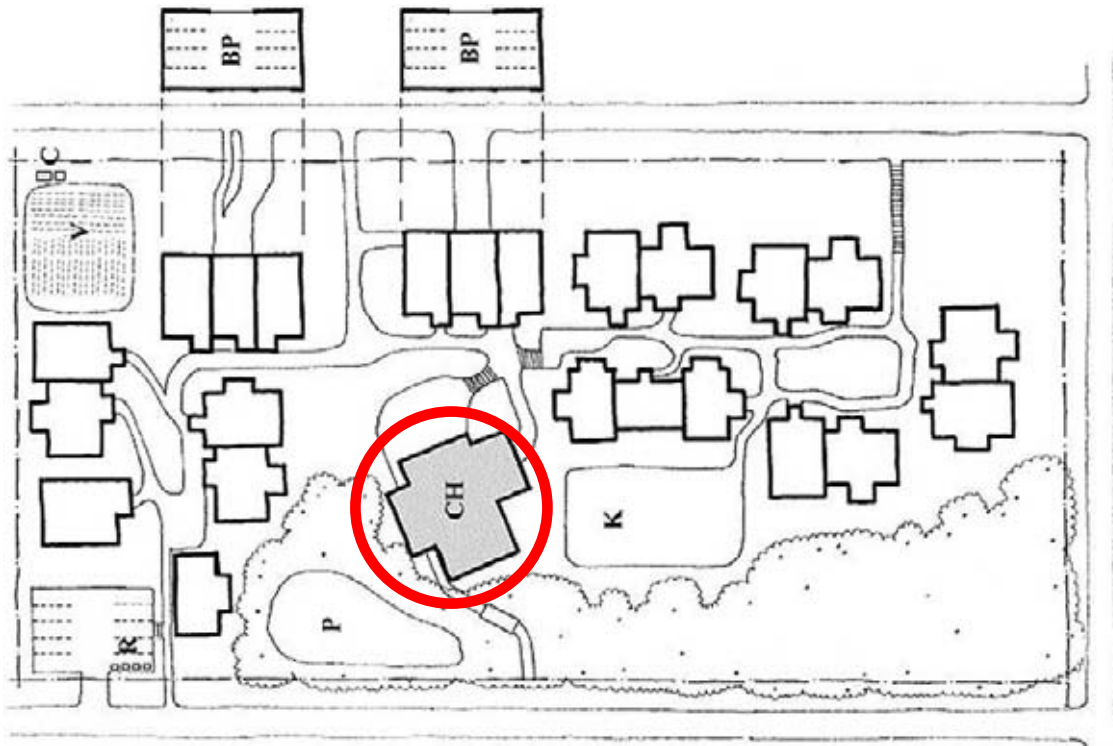
Jackson Place

- Townhomes along Pedestrian Street
- Urban
- 27 units / 12.5 acres



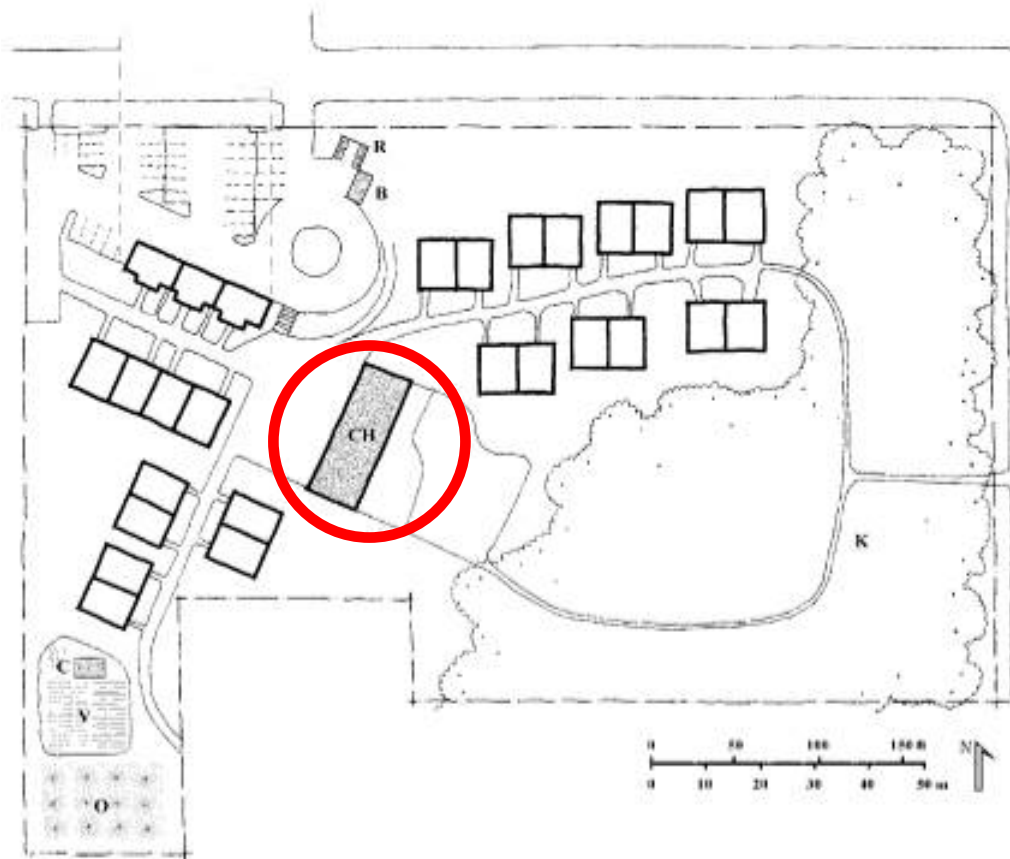
Puget Ridge

- Duplex/Triplex
- Urban
- 23 units / 2.42 acres



Winslow

- Duplex / Attached
- Suburban
- 22 units / 4.85 acres

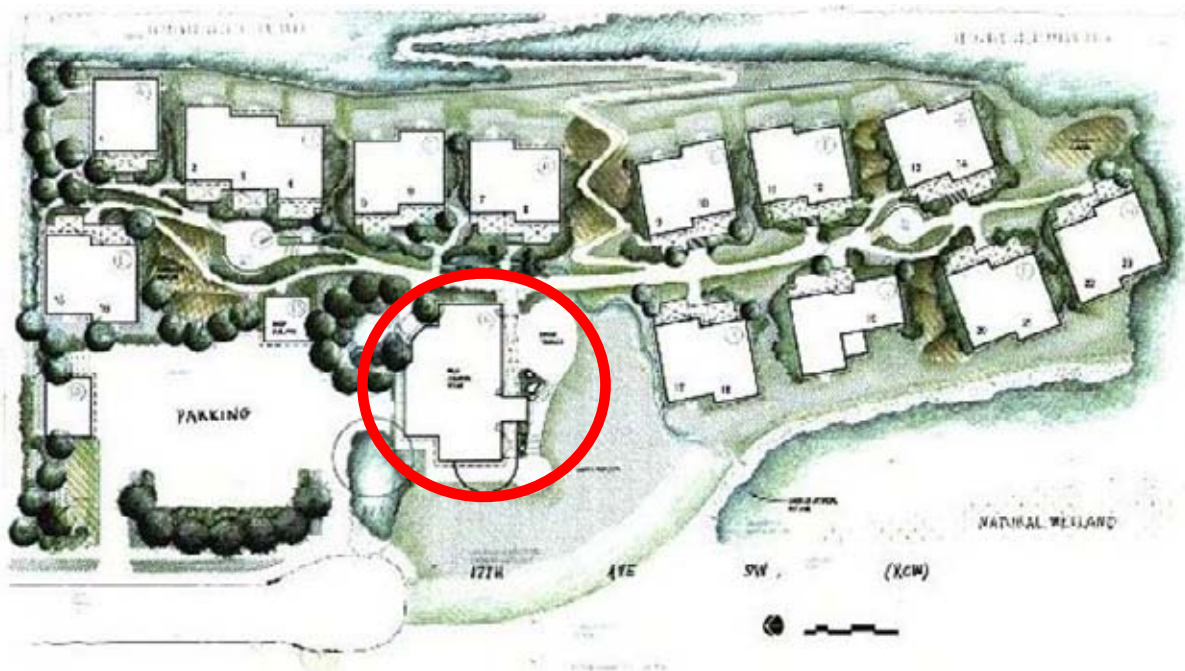


- Duplex surrounding Common Green
- Suburban/Rural
- 13 units / 10.7 acres



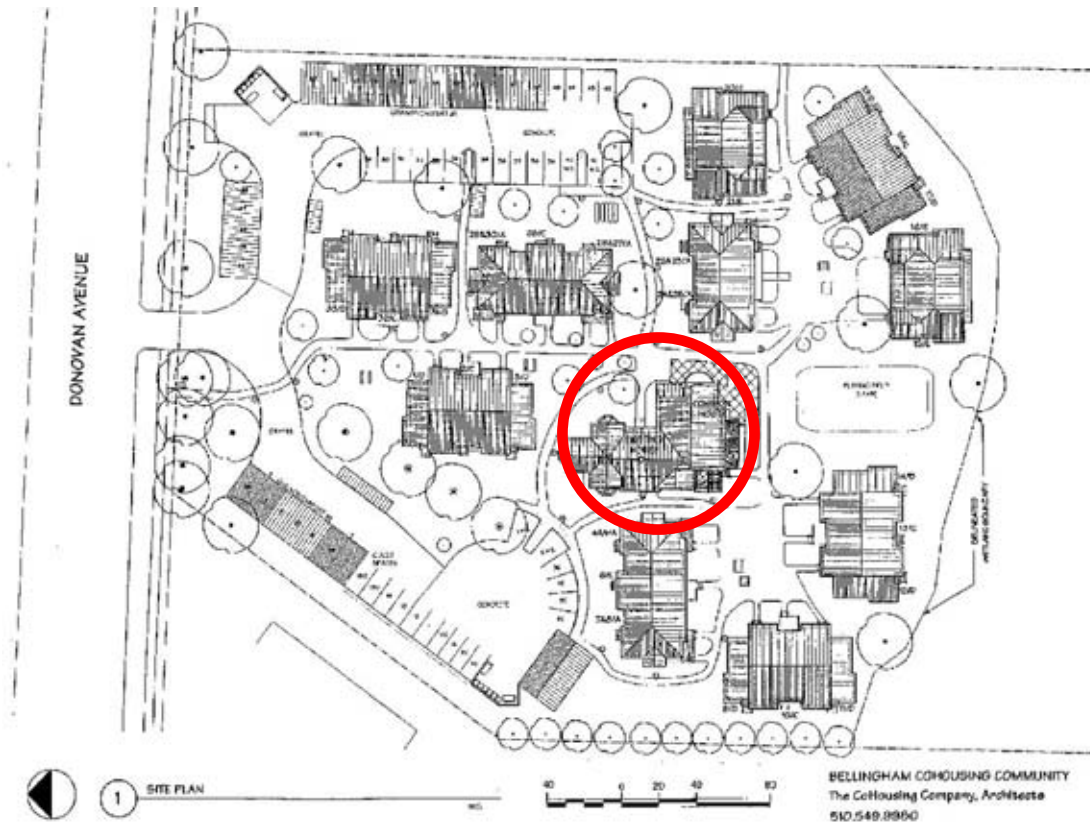
Duwamish (formerly Ciel)

- Duplex along Pedestrian Street
- Urban
- 23 units / 2.7 acres



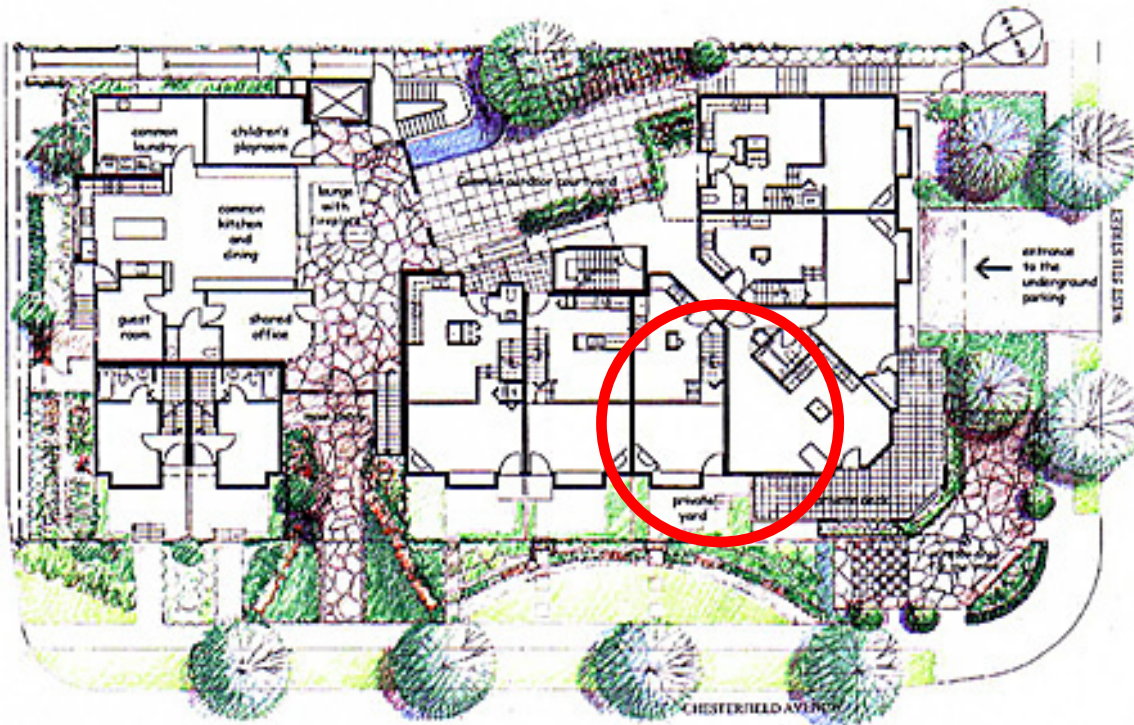
Bellingham Cohousing

- Attached surrounding Common House
- Suburban
- 33 units / 2.7 acres



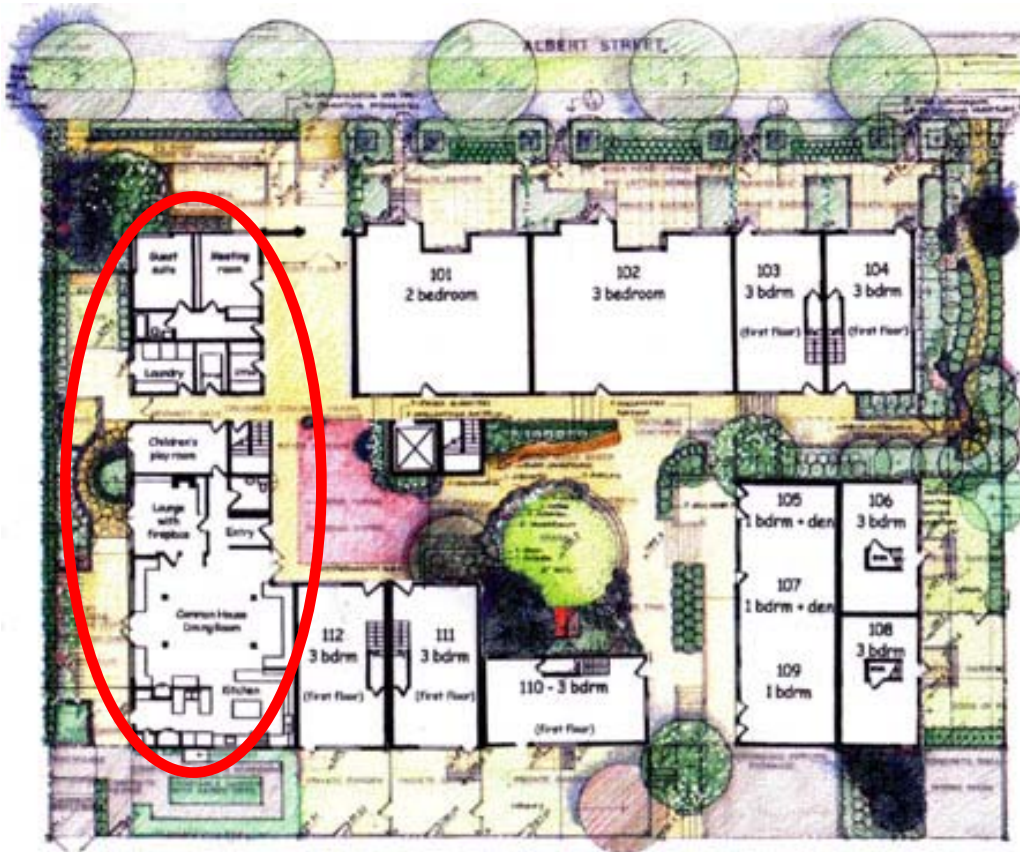
Quayside Village

- Multi-story, multifamily building
- Condo, but 4 permanently affordable, 2 rentals
- Urban/City Center
- 19 units / .4 acres



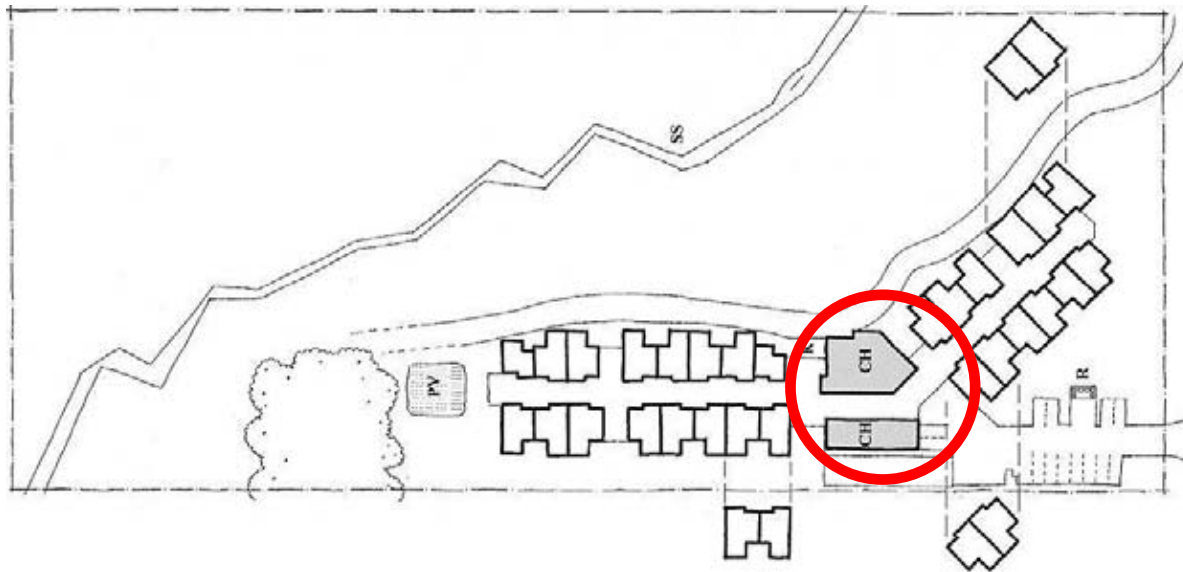
Cranberry Commons

- Multi-story, multifamily building
- Urban
- 22 units / .5 acres

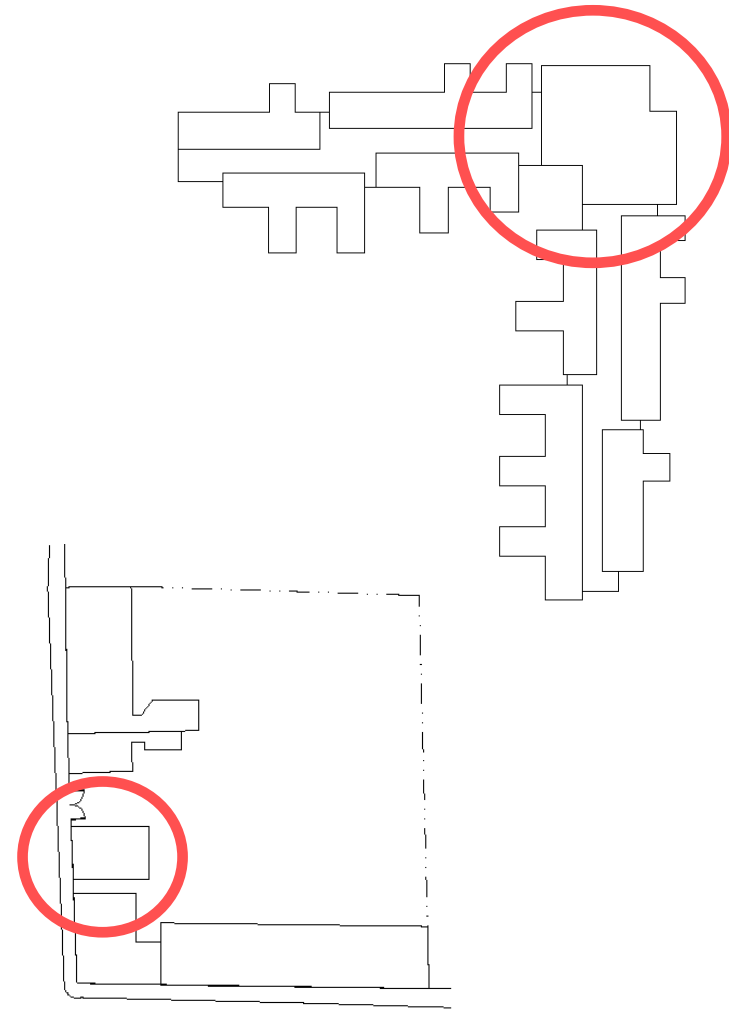
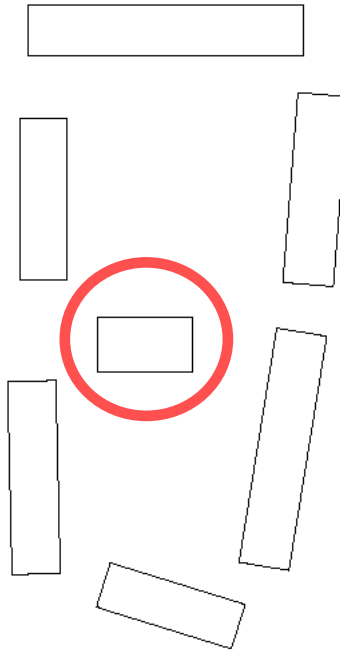
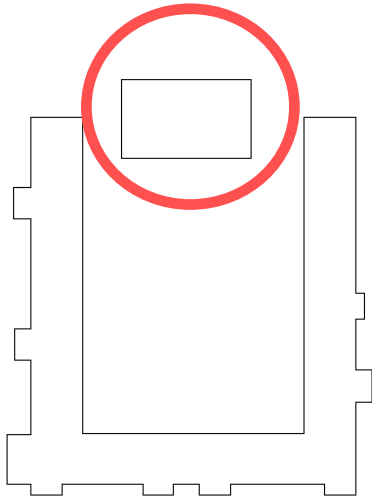
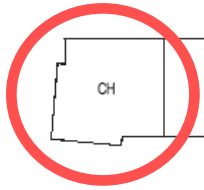


Windsong

- Townhouses along interior street
- Suburban / Rural
- 34 units / 5.84 acres

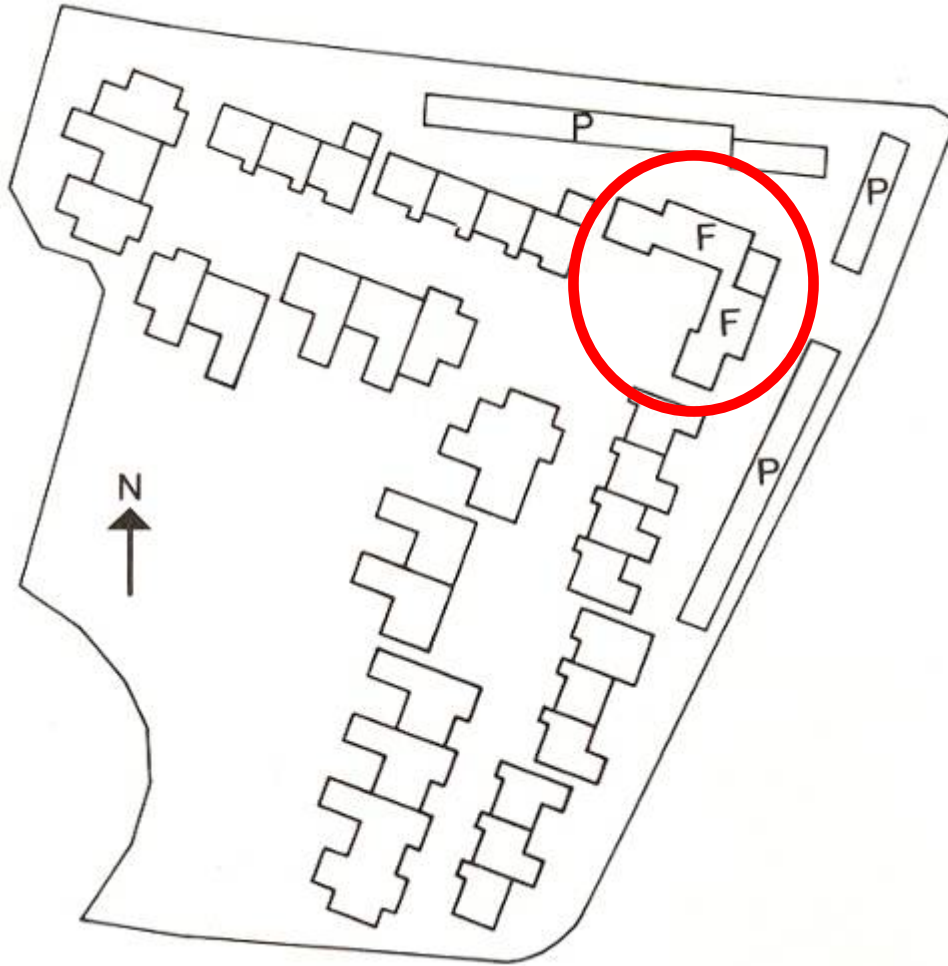


Site Planning

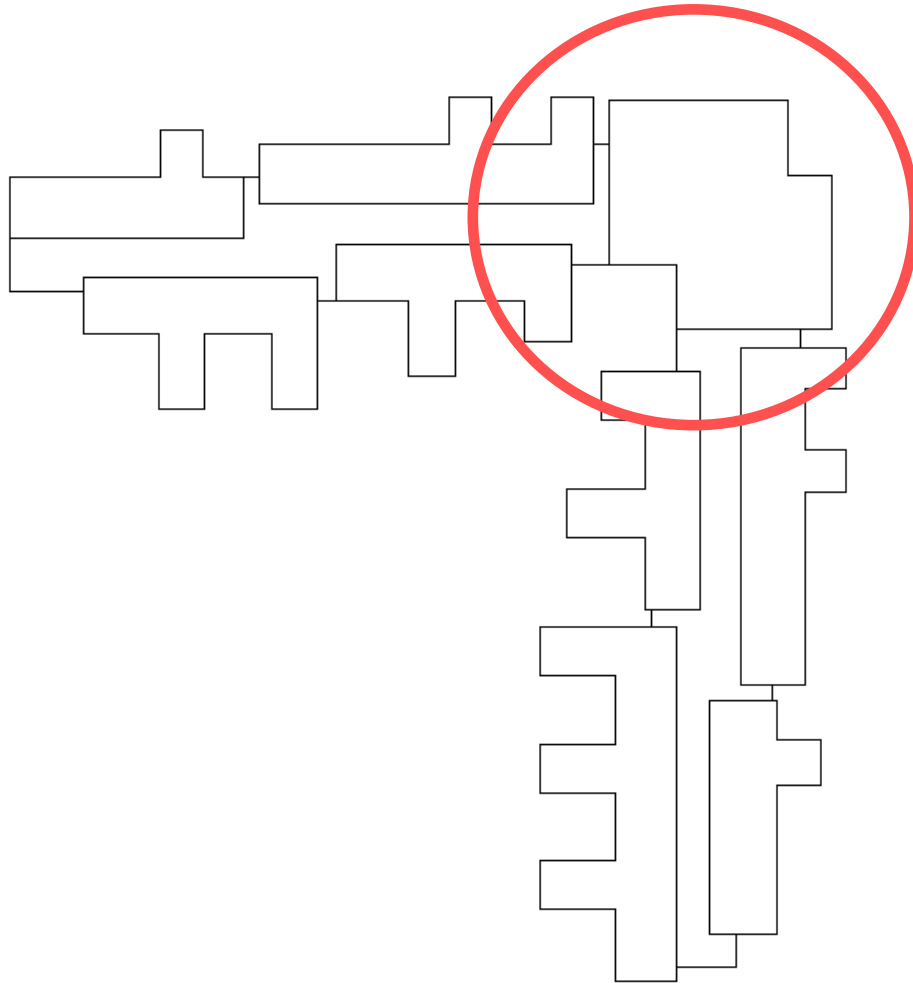


Important for establishing central hub but does not guarantee community

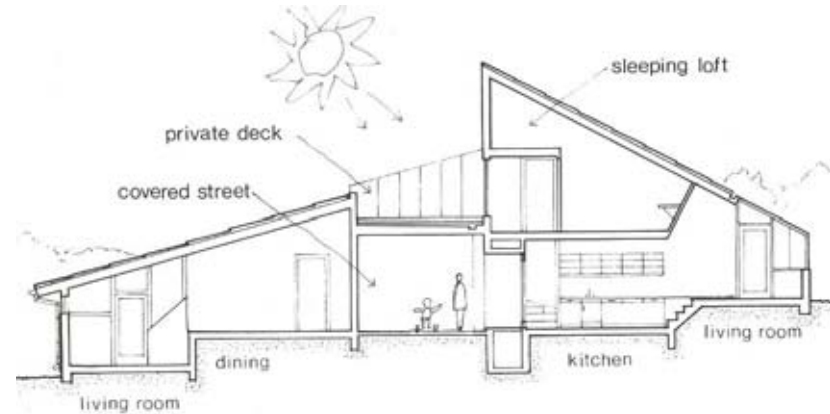
Trudeslund – L-shaped



Jystrup: L-shape plan

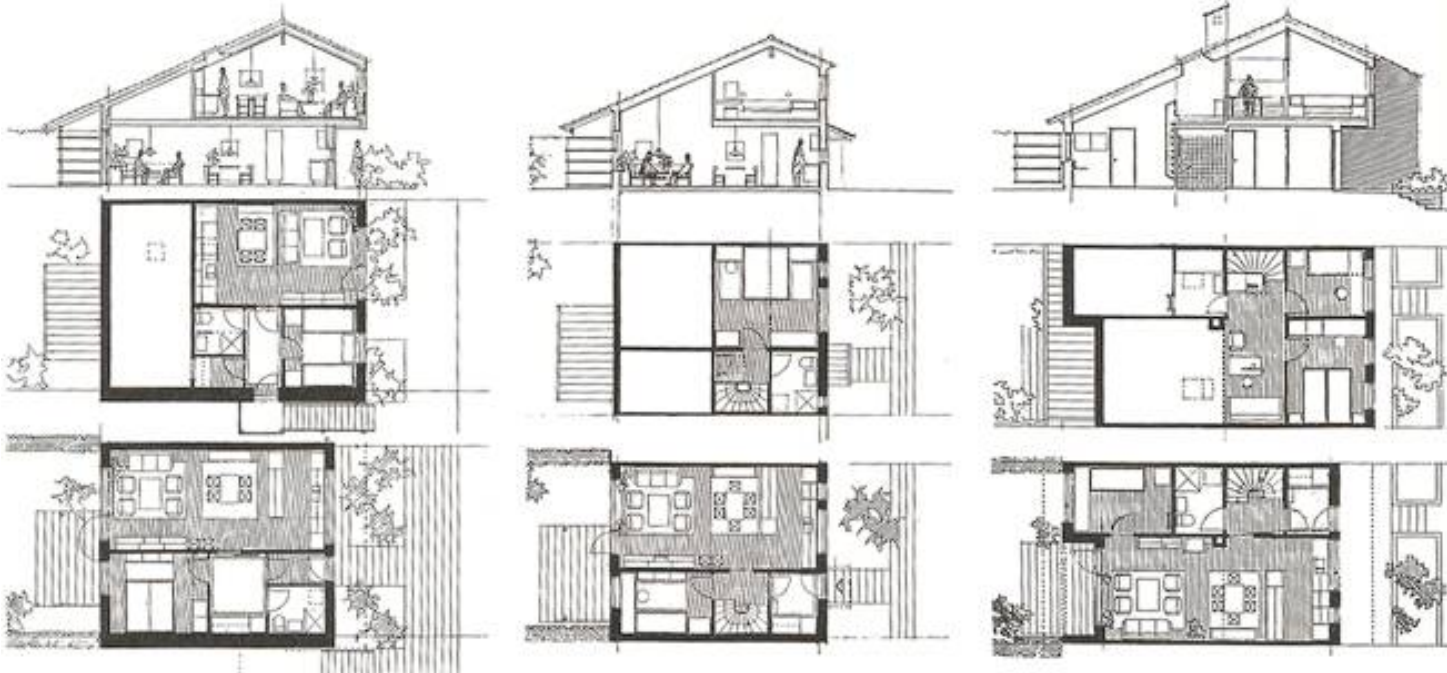


Jystrup Savværket :Hierarchy of Privacy



Danish residential units

- ranged from 300sf to 2000sf
- split level vs. single story
- view units vs. garden units
- detached vs. attached/multistory



residential interiors

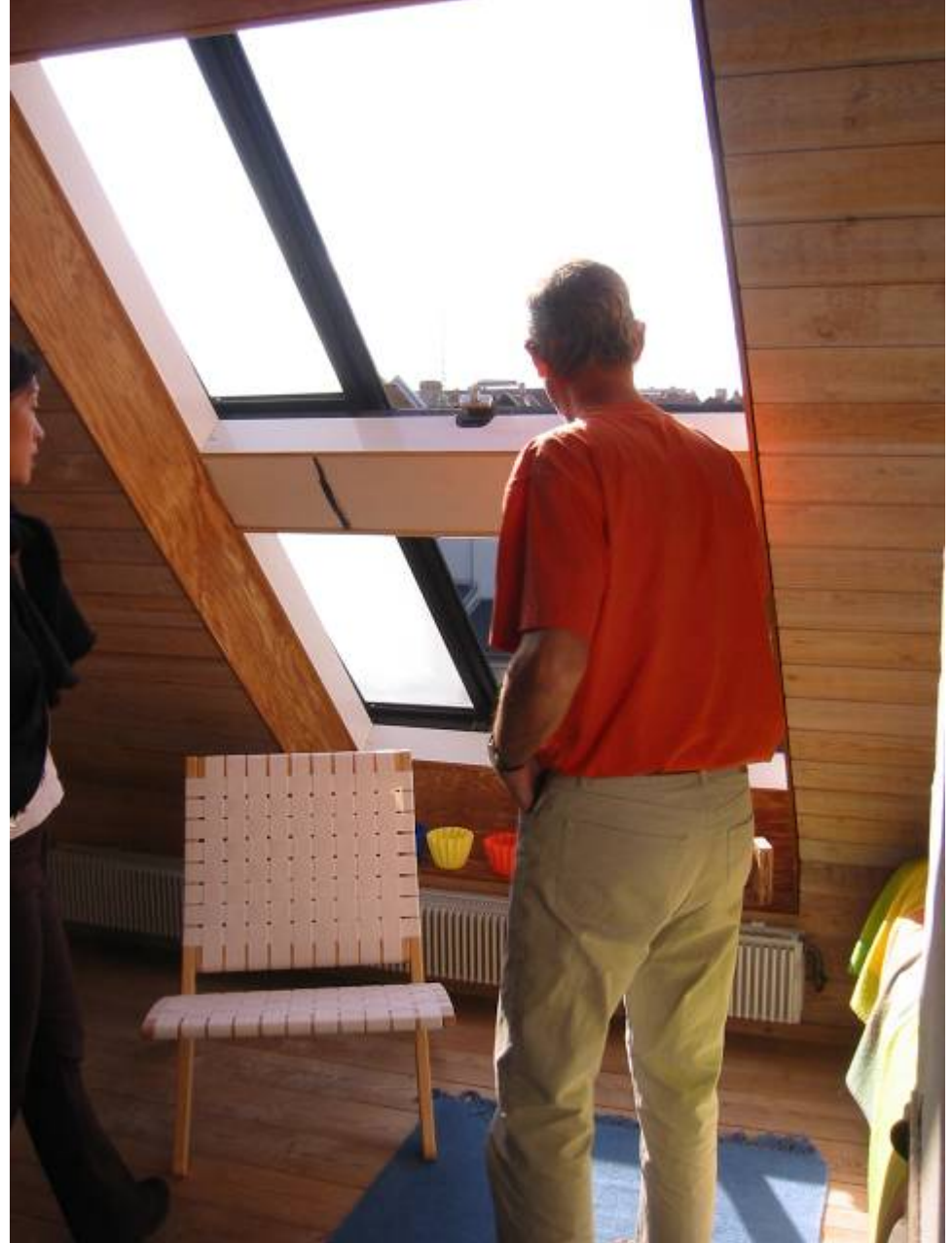




vertical units



lofts



lofts



kitchens



places to sit – defensible spaces



interior landscaping



exterior landscaping

An aerial photograph of a well-maintained garden. A winding brick path leads through various plants, including a large tree with red flowers, a bench, and a circular paved area. The garden is filled with greenery and colorful blooms.



hygge



Community Street - Kilen





Community Street – Ådalen I





Community Street - Drivhuset





Community Street - Jystrup





Questions?



Grace H. Kim

Schemata Workshop

www.schemataworkshop.com